

Item No. / Qty	1	1
Tag No.	25-PV-003	
Service		
<Control valve>		
Model	HCB	
Description	Pressure Balanced Cage Type Control Valves	
Body/Port size (in.)	2	2
Conn. Size. / Rated CV		60
Rating / Conn. Type	ANSI150	RF
Body material	SCPH2	
Trim material	SCS14A	
Flow characteristic	EQ%	
Bonnet	PLAIN (-17 to 230 degC)	
Actuator / Handle	HA3R	---
Action	AIR TO OPEN	
Gland packing / Grease	NP4519	---
Gasket	V543,V8590	
Air supply / Spring range	0.2-1.0kgf/cm2	
Seat leakage	CLASS II	
Color: Body/Diaph./Yoke	SILVER	2.5YB/12 2.5YB/12
Paint	Standard	

<Accessories>

Positioner
 Structure
 Input signal
 Regulator
 Regulator2
 Limit switch
 Action
 Solenoid valve
 Action / Power
 Unit name
 Booster
 Air lock valve

<Process data>

Fluid name/Phase	WAX/Solvent			LIQUID
	MAX	NOR	MIN	Unit
Flow rate	18.8			m3/h
Inlet pressure	3.57			kgf/cm2A
Outlet pressure				kgf/cm2A
Differential press.	0.5			kgf/cm2
Shut-off press.		8		kgf/cm2
Temperature	60			degC
Density/Gravity(Liq)	0.795			water=1
Density/Gravity(G,V)				MW
Viscosity	0.747			cP
Flash				%
Calculated CV	27.67			
Travel	63			%
Inlet velocity	2.661			m/s
Predictive SPL	50			dBA

Ref. No.	TYC/1356/KD
Purchaser	Yamatake Europe
End user	KRPC Nigeria
Project	Relacement

<Remarks>

SV0703-105 Indicating unit : "kgf/cm2"
 SV0003-001 Valve size indication: ' ' '
 SV0101-004 Flange facing finish : Serration ANSI B16.5 (Spiral)
 SV0601-001 Air piping Connection: 1/4 NPT
 SV0602-002 Air piping: Vinyl covered copper tube.
 Joint:Cr plated with vinyl cap
 SV0201-007 Seat leakage: Less than 0.5%CV
 (Equivalent IEC, JIS Class II)
 Serial No. of existing valve: 416-8315-0300 (supplied in 1979). Model: VDP 2"x 2", ANSI 150#RF

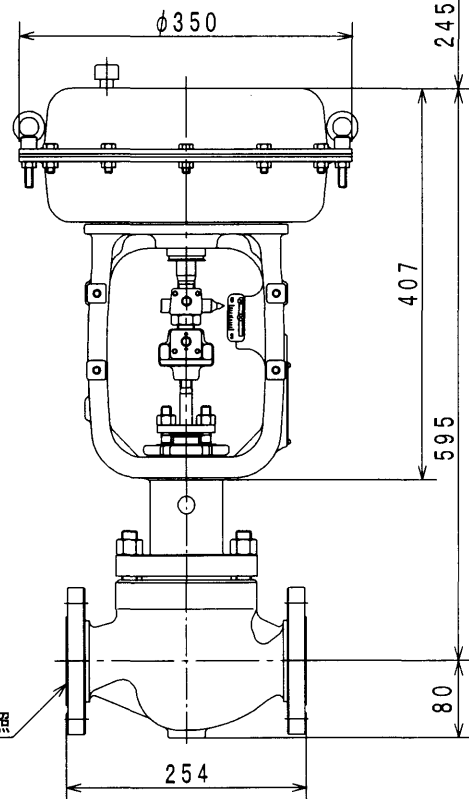
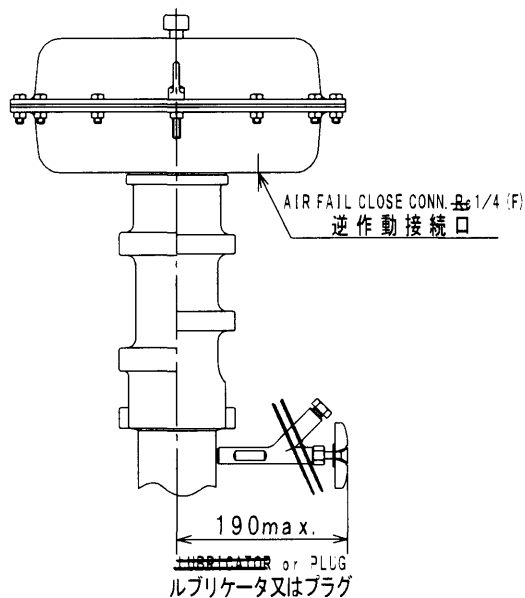
HPG
 Strength Calc. She
 ~*

<Piping spec.>

Design	kgf/cm2G
Temp.	degC
Size	
Sch No.	
Thickness	

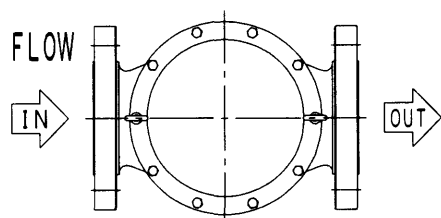
Yamatake Corporation

1

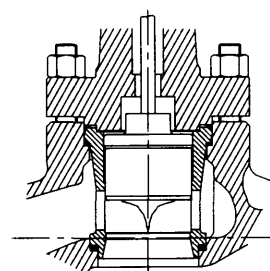


2

3



ORIENTATION
配管取付姿勢 No. 1



4

PRODUCTION No. 工事番号	OLD. 416-8315-0300
Tag No.	25-PV-003

UNIT: mm

Press. Balanced Cage Type Control Valve プレッシャバランス形ケージ調節弁	NOMINAL SIZE (INCH) 口径 (B)	RATING 圧力定格 (フランジ規格年度)	END CONNECTION 接続形式	BONNET TYPE 上蓋形式	ACTUATOR 操作器	VALVE ACTION 弁作動	TRAVEL トラベル	WEIGHT 製品質量 (kg)
MODEL No. HCB	2	ANSI 150 (1981)	RF	PLAIN TYPE 常温形	HA3	AIR TO OPEN 逆作動	25	49.0

5

Yamatake Corporation

DRAWING No.
103E-07858

A

B

C

D

E

Rev.0

1

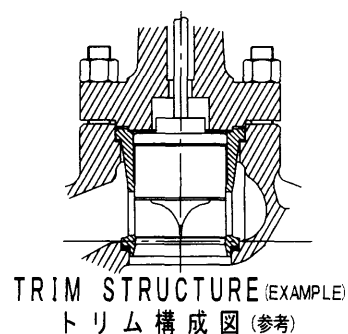
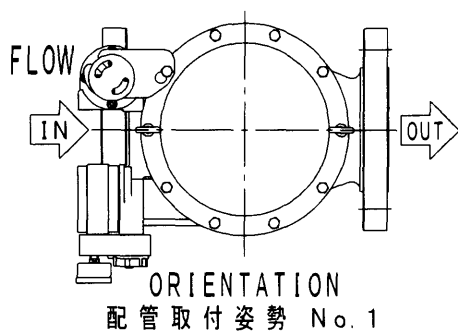
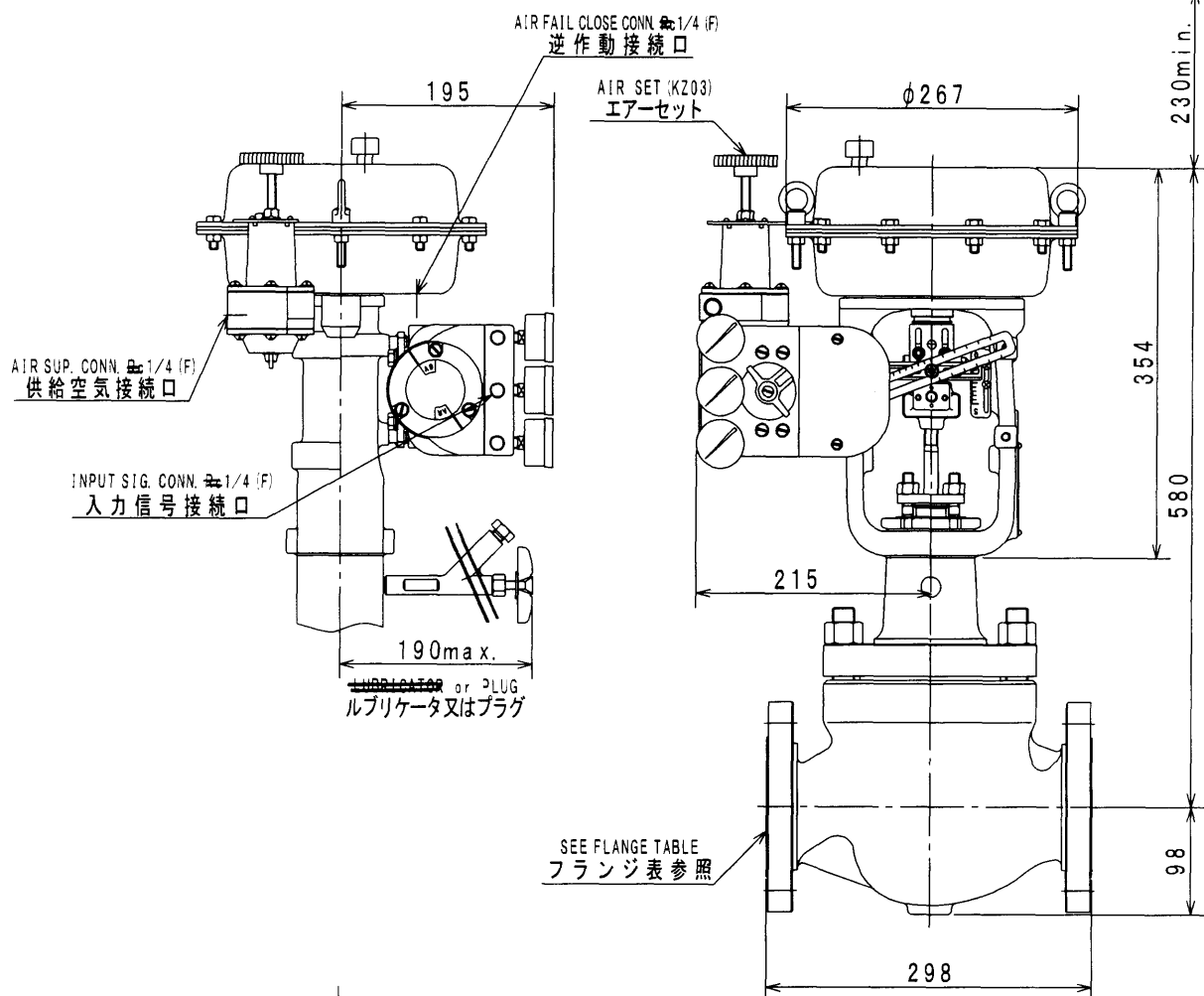
1

2

3

4

5



PRODUCTION No. 工事番号	OLD. 416-8315-0800
Tag No.	25-PV-015-B

UNIT: mm

Press. Balanced Cage Type Control Valve ブレッシャバランス形ケージ調節弁	NOMINAL SIZE (INCH) 口径 (B)	RATING 圧力定格 (フランジ規格年度)	END CONNECTION 接続形式	BONNET TYPE 上蓋形式	ACTUATOR 操作器	VALVE ACTION 弁作動	TRAVEL トラベル	WEIGHT 製品質量 (kg)
MODEL No. HCB	3	ANSI 150 (1981)	RF	PLAIN TYPE 常温形	HA2	AIR TO OPEN 逆作動	38	56.5

Yamatake Corporation

DRAWING No.
103G-09042

A

B

C

D

E

Rev.0